



# Speaking of Fire

Winter 2010

A publication from YOUR Shawnee Township Fire Department

Volume 1 Issue 3

2526 Ft. Amanda Rd. Lima, OH 45804 | (419)222-2986 | www.shawneetwpfire.com

## INSIDE THIS ISSUE

- 1 Shawnee Fire begins 50<sup>th</sup> year
- 1 Shawnee Fire Using GPS Mapping
- 2 Planning for the Future
- 3 Department's newest
- 4 For the Record

## Shawnee Fire begins 50<sup>th</sup> year

*Platoon Chief John Norris*

2010 begins the Shawnee Fire Department's 50<sup>th</sup> year serving its ever growing community. The department plans several things in the coming months to celebrate including an open house even on May 15<sup>th</sup>, 2010. "It's a huge milestone", stated Chief Todd Truesdale, "it's something to be very proud of and proud to be a part of."

While the first 10 firefighters were hired in early 1960, those crews were preparing to officially take calls in June of 1960 when residents started calling its own fire department prior to the official start time. From these first 10 firefighters working on 2 platoons of 72 hours per week providing fire protection, to 3 platoons of 7 working 56 hours per week providing the latest in Emergency Medical Care, Hazardous Materials Response, Confined Space Rescue, Rope Rescue, in addition to fire protection. We have come a long way.

Further information will follow regarding the department's celebration of its 50 years of service.

## Shawnee Fire Using GPS Mapping

*Platoon Chief John Norris*

Shawnee Fire is now using the latest in GPS/GIS mapping capabilities to aid in response. Using leftover funds re-allocated to this project the department launched the \$16,000 project. "Without this grant, this technology would not have been able to be utilized by our responders as it is now", stated Fire Chief Todd Truesdale. In early December, the Department purchased software licenses from Digital Data Technologies Inc. from Columbus, Oh. The software, installed on laptops in the medic units, the department's Heavy Rescue, and in Dispatch links all onto a live updated GPS map showing vehicle locations, turn-by-turn directions, and other important information. "It's an invaluable tool", stated Chief Truesdale "it shows our responders not only a drawn map, but once zoomed in, an aerial view showing the location with address

---

*"Without this grant, this technology would not have been able to be utilized by our responders as it is now"*

*-Chief Todd Truesdale*

---

## Planning for the Future

*Fire Chief Todd Truesdale*

Currently we have several important issues that we will be addressing that involve the budget and service we provide to our community. The first thing I would like to tell all of our residents are that we striving to provide the best service possible with fiscal restraint to meet the needs of the community. That being said, the Tangible Personal Property Tax that we have collected over the years has been changed to what is known as the Commercial Activity Tax which will be depleted from our budget over a seven year period. This totals vary somewhat but the estimated loss would be about \$740,000. This will start in 2011 with us losing an estimated \$100,000 the first year, \$200,000 the second and so on until the end of the seventh year with a loss of the total \$740,000. This projected loss represents about 35% of our budget. Currently we are working to lobby our legislators to address this situation. We are hopeful that this situation is resolved soon to return these projected losses of tax dollars back to our budget. If we are able to keep this funding with the levy renewal in 2011, along with medical billing (which generates about \$180,000 to \$200,000 per year depending on run volume), we should continue to provide you the same excellent service you have come to expect from us for many years to come.

Recently, we instituted a truck replacement plan for the next 30 years which we commenced this year. A big area of concern is new EPA standards for diesel emission that came into effect January 1, 2010. Without getting to lengthy into this discussion, the bottom line is an additional cost incurred of an estimated \$25,000 up \$45,000 more per vehicle purchased after the January 1<sup>st</sup> date. This does not include the increased cost for service and a vehicle constructed wider to accommodate the emissions equipment.

I am really proud of my truck committees that were formed to help us acquire a couple of new pieces of equipment. In 2009, the department purchased Medic 10 as a remounted unit at a total cost of \$120,000 on a medium duty chassis designed for longer service time. This vehicle comes with a warranty as a brand new unit and with buying a remount we saved \$60,000 at a minimum. The other vehicle the department replaced was our heavy rescue which was purchased as a demo for \$366,000. The cost savings here was estimated as \$40,000. One Emergency response vehicle that the township could not afford to replace with our budget would have been our ladder truck. Unfortunately Firefighter Dick Oder was in a serious accident with our Ladder 3 and insurance replaced this

---

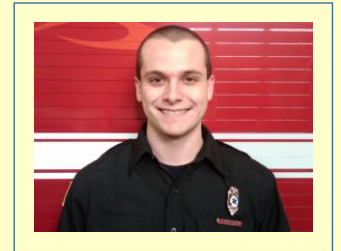
*Chief Truesdale can be contacted by calling the fire department's business line (419) 224-2636 or chief@shawneetwpfire.com*

---



## Matt Reaman is newest Shawnee Firefighter

On January 3<sup>rd</sup>, 2010 Shawnee Township added its newest member to the ranks. Matt Reaman, a 22 year old 2006 Shawnee High School Alumni, is excited to begin his career at Shawnee Township. "It's an honor and a privilege to serve the community I have lived in my whole life", stated a smiling Reaman. Matt originally started serving the Township as a Volunteer in August of 2007 and hit the ground running. Matt completed his 36 Hr. firefighter certification in 2007, received his EMT-A certification in 2008, attended the Ohio Fire Academy's 240hr Firefighter II certification in 2009 and is currently enrolled in the Rhodes State Paramedic program slated for graduation in June of this year. Matt has been with his girlfriend for the past year, and he and his 4 year old son Blake reside in Shawnee Township. Welcome aboard Matt!!



Firefighter/EMT  
Matt Reaman

### *GPS Mapping from page 1*

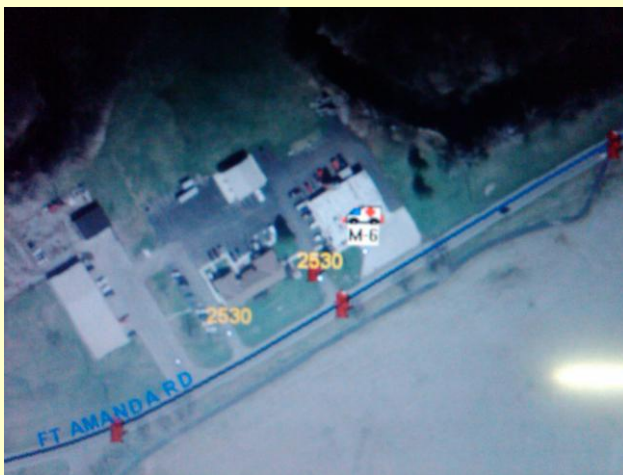
information, hydrant locations, and distance measuring capabilities while responding."

When a call is received in the dispatch center at Shawnee Township, the dispatcher enters the callers address into the Computer and the mapping software takes it from there. It plots the location on the dispatcher's map, and allows them to assign that to a vehicle. Once assigned to a vehicle, the information is transmitted to the laptops in the vehicles almost instantaneously. As units respond the map is updated showing current locations, and also valuable information to the firefighters such as hydrant locations, distances to the closest hydrant can be obtained and an aerial image brought up of the structure. "At 3:00am in the dark, our responders will see an aerial picture of the location showing driveway location and being able to count the 3<sup>rd</sup> house on a street rather than looking for an address sign makes the process of finding a location MUCH MUCH faster."

---

**\$16000 Grant funding provided for mapping software from DDTI in Columbus, OH**

---



*Planning for the Future... from page 2*

almost \$1,000,000 piece of equipment costing the tax payers only \$500. Both new vehicles (Medic 10 and Heavy Rescue 1) are being paid for through the medical billing fund.

At the end of December, the Township made a move to agree to purchase a new Engine. Both the current Engines we have now were built in 1993 and are starting to deteriorate and the department needed to make a decision to replace one of them. This Engine will be built to our specifications and the price would have been an estimated \$470,000 if the department waited until after January 1, 2010. This price reflects not buying pre-emission standards, and the price increase of \$10,000 for 2010 production. The price the department will pay will come in at \$379,950. If the department prepays the amount on the chassis for this Engine, we can get the cost of

the Engine down to \$375,000. As you can see, it is not cheap to run a fire service but with these timely purchases we have saved an estimated \$195,000 to keep the reliable service continued to our community. We strive to continue to provide a professional compassionate service to everyone in and outside our community. Please feel free to contact me at anytime if you have any questions.

Chief Truesdale can be contacted by either calling the Fire Dept. business line at (419) 224-2636 or via [chief@shawneetwpfire.com](mailto:chief@shawneetwpfire.com)

---

**For the Record**

2009 Calls	
EMS-	847
Fire-	218

**Shawnee Township Fire Department**

2526 Ft. Amanda Rd.  
Lima, OH 45804

**Phone:**  
(419) 222-2986 or (419) 224-2636

**Fax:**  
(419) 229-9749

**E-mail:**  
[info@shawneetwpfire.com](mailto:info@shawneetwpfire.com)  
[chief@shawneetwpfire.com](mailto:chief@shawneetwpfire.com)

